



Sherwood Forest Estates Fire District

450 Little John Road, Williams, AZ 86046-8579

Phone: (928)635-9837 Fax: (928)635-9618

Email: sherwoodfire@qwestoffice.net

FISCAL YEAR REPORT **July 1, 2021 – June 30, 2022**

CHIEF'S OVERVIEW

The Sherwood Forest Estates Fire District (SFEFD) remains dedicated to providing effective emergency response and hazard mitigation to the Sherwood Forest Estates and Mountain Rose Ranch Estates developments. Additionally, a high priority has been given to being an effective resource to our regional emergency response partners.

This report is an overview of our organization, a review of the significant projects completed during the fiscal year, a listing of the emergency incidents responded to, the operational and maintenance expenditures, and a demographic overview of our team members' skill sets, training, experience, and tenure.

PRESENT CHALLENGES

To better understand the improvements made and the requests for equipment in the future fiscal year, everyone must understand and accept that the fire danger to the District and our region has significantly increased. Contributing factors include the almost complete buildout of the residential developments in our Fire District, climate change, i.e., dryer summers and winters and the worsening drought conditions in the southwestern US, increase in human-caused fires due to persons now living in our forests, our limited volunteer base, supply chain delays and shortages, the ongoing pandemic, ever increasing medical calls, and now inflation, which is heavily impacting fuel and vehicle maintenance costs. These factors, in total, are daunting.

Aware of these evolving challenges, we instituted needed improvements which will give the SFEFD the ability to lessen the impacts of these challenges and result in a more flexible and responsive emergency capability.

EMERGENCY PREPAREDNESS ACCESSED – IMPROVED

Beginning July of 2020, I placed the readiness of our apparatus and the safety of our personnel as the highest priority. This involved more training, improved safety equipment, and communications equipment providing effective operational control and a safer, more efficient facility. I also made a “mission capability assessment” of the fleet and our facility. Besides the operational benefit, it also offers a hedge against inflation. Our now smaller fleet reduced the cost of replacement tire and batteries, reduced hose and fire equipment formerly needed to fully equip a larger fleet and lessened annual maintenance expenditures may remain the same due to inflation.

I can state with confidence that our efforts of creating a safer work environment for our firefighters with a more functional fleet has resulted in a higher level of operational capability. All of this has been accomplished while focusing our limited funding to those most critical areas of need.

FACILITY AND FLEET IMPROVEMENTS

Our recent station upgrades consisting of concrete aprons in front of both buildings was completed and has made a positive effect. The trees around the fire station were trimmed (one removed) and pine needles removed to assist with strengthening the station’s survivability. The concrete project was facilitated by another Sherwood Firefighters Foundation (SFF) grant and the tree maintenance was performed with the guidance of Kaibab Forest personnel. Asphalt millings were added to the station parking lot to repair surface damage and improve drainage.

Each vehicle now has the ability to communicate directly with our dispatch center, and the firefighters’ portable radios have had frequency updates expanding their versatility. This was made possible by the purchase and installation of a repeater on top of Bill Williams Mountain, again, courtesy of grant funding from the SFF.

We are focusing considerable effort toward increasing the multifunctional capability of each vehicle. The SFEFD, like other area agencies, is transitioning from the “one vehicle-one task” mentality and moving toward smaller, lighter, more versatile vehicles that can respond quickly and offer multiple capabilities. In furtherance of this proven trend, Tender 4 has been outfitted to perform fire suppression activities instead of solely hauling water. Similarly, Tender 8 now has improved water delivery capabilities and upgraded fire suppression capability. We are resurrecting the water trailer to be road-

worthy and better able to perform drafting and pumping operations. The potential missions this trailer will be able to perform are numerous.

Several obsolete trucks were retired, and much outdated, inefficient, and non-functioning equipment was disposed. Several significant building hazards were corrected courtesy of grant funding from the SFF. We now operate a downsized, reliable, younger, and more capable fleet operating out of a clean and orderly facility. Our efforts have resulted in a more functional fleet, a higher level of operational capability, and a safer work environment for our firefighters. All this while focusing our limited funding to those most critical areas of need.

Our expenditures have also included purchases to enhance capability including tires (all our vehicles are now NFPA compliant with regards to age of tires), new hose, nozzles, hand tools, fire suppression backpacks, and most of all, radio communications.

OPERATIONAL IMPROVEMENTS

As our calls for service have increased, so have interactions with our neighboring emergency service agencies in the region. This expanding coordinated joint response mode is becoming the standard for how all agencies will operate in the future. The advantages are numerous: a larger, more capable response, better crew utilization, a safer operating tempo for our firefighters, and a lessening of the overall impact from the increasing emergency demands placed on each agency individually. The SFEFD now benefits from strong interagency cooperation with our regional partners to better address the impacts of regional growth and ever-increasing response demands and risks. Our neighboring agencies have jointly increased mutual training opportunities, improved radio communication links, and general interoperability. Our neighboring agencies are Ponderosa FD, Junipine FD, High Country Fire Rescue, Williams FD, Ashfork FD, Summit Fire and Rescue, and the USFS.

This positive interaction was obvious in the first three fires of this season and when repairs were needed for damage to USFS Road 102. It should be pointed out that USFS Road 102 is our emergency evacuation route to the south and was in significantly degraded condition. Additionally, the Mountain Rose Ranch Estates HOA informed me of plans to rock the short portion of the Minstrel Lane secondary emergency access connector which crosses private land from the south end of Minstrel Lane to USFS Road 102, thereby making it all-weather capable. SFEFD has been approved for fleet

maintenance support from Summit Fire and Rescue. The hourly costs are comparable to commercial rates and their personnel are fully trained fire apparatus mechanics.

The 2021 Rafael Fire was not only a week-long dramatic event, but a very stressful time for our Fire District's residents. It was considered by many the most dangerous situation the District has faced to date. An extreme wind shift brought in dense smoke which inundated our District and visibility dropped to near zero. A fear existed that the fire's course had shifted toward SFEFD. The USFS had no ready confirmation, so we immediately proceeded to reconnoiter to the south for spot fires. At that time I requested mutual aid resources. As the incident resolved, mutual aid resources were released. High County Fire and Rescue offered to continue their fire truck with five personnel for stand-by. The High Country Chief and his crew stayed at our fire station for four hours, bolstering our defenses as our staff was limited.

Rafael's impact continues. Since then, I have attended multiple meetings which resulted in improvements to the evacuation process for our Fire District. We continue to work with the Coconino County Sheriff's Office (CCSO) to solidify what the role of this District is in evacuation processes and conversely, how we can help the CCSO when we are not directly impacted.

FUTURE CHALLENGES

The focus of the SFEFD remains ensuring a constant and capable response model. Looking forward we know there will be continuing challenges to overcome. One challenge is the current discussion among area emergency agencies in regard to the announcement by APS of the certainty of area-wide electrical brown outs and blackouts. The second is the impact of escalating fuel costs. These two items highlight the critical and immediate necessity of the SFEFD in acquiring an emergency power unit and a ready fuel supply at the fire station. Our emergency response capability will be significantly degraded if we have no power or fuel.

As to the future of our fleet, its average age is 23 years. Future repairs and fuel costs will be an increasing funding burden. Our goals for the next fiscal year include requesting the purchase of a Type 6 vehicle to replace Brush 11. Brush 11 is 29 years old and has a manual (stick shift) transmission with a very heavy clutch pedal. While it is on loan to our agency from AZ State Forestry, the SFEFD is fully responsible for its ongoing upkeep. This vehicle is nearing a point of unsustainable maintenance costs.

The manual transmission also presents operational difficulty to some of our members. It is the third most expensive vehicle to operate and maintain out of our fleet of eight.

FUTURE GOALS

Goals include integrating our handheld radios, purchasing a rescue tool to assist with forcible entry and rescue, obtaining new replacement hose and fire equipment, and improving our breathing apparatus. Our training program continues to improve as evidence by our firefighters' excellent performance in numerous fire responses this year. Recruitment and retention of firefighters will remain an ongoing goal. Finding volunteers from within the SFEFD district remains an ongoing challenge to our maintenance of a sustainable emergency response capability.

CONCLUSION

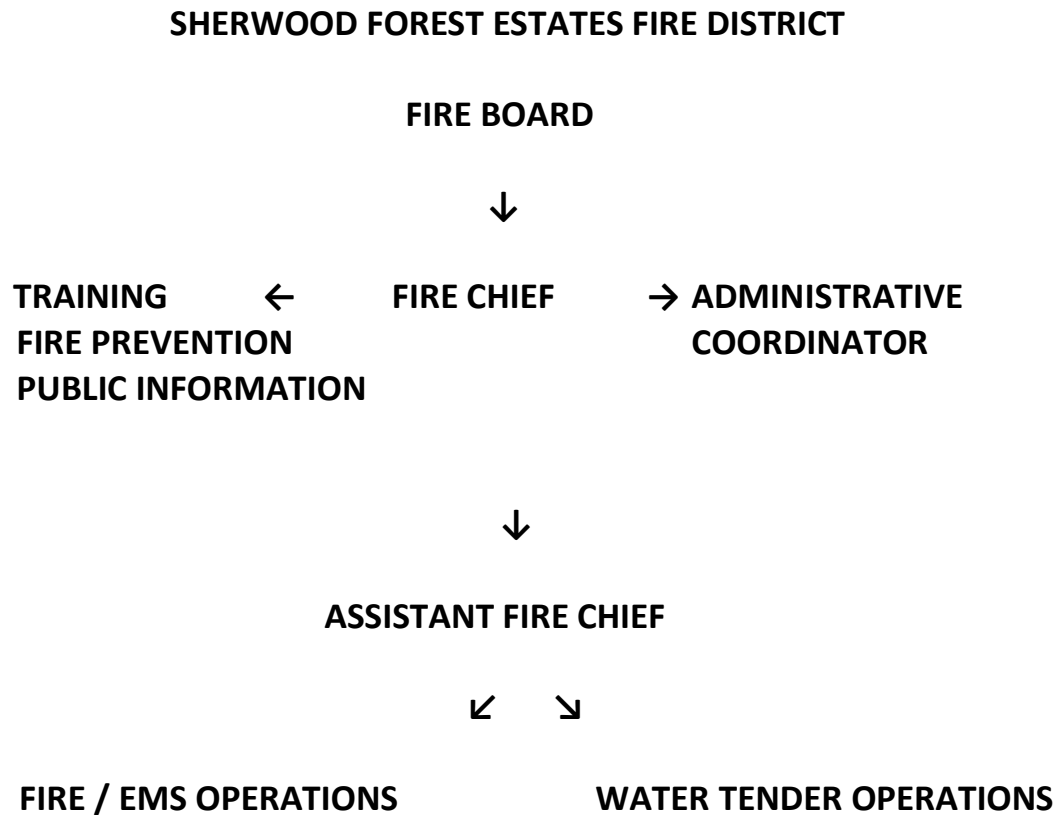
I wish to acknowledge the dedication and resilience of our SFEFD staff. I remain appreciative of Matt McDowell's consistent support and help. The same can be said of our Administrative Assistant Brienne McDowell who is our "behind the scenes" organizer. To all our firefighters I say, "Thank you!" If not for your efforts, the SFEFD could not function.

I appreciate any feedback and suggestions the Fire Board may have and would encourage the residents of our Fire District to reach out to us with their thoughts.

We encourage everyone to visit our website and welcome any comments via email or by a personal visit to the firehouse. This public document will be posted on the Fire District's website and disseminated to the SFE POA and MRRE HOA to further public outreach and transparency of our efforts as a tax-payer-funded public safety organization.

Respectfully Submitted,
John D. Moede, Fire Chief
July 9, 2022

Organizational Chart



Fleet Composition / Maintenance Expenditures

Apparatus	Year/Make/ Age in years	FY Maintenance Cost
Engine 1	2006/GMC / 15	\$1,764.38
Tender 4	2002 / FL70 /19	\$4,039.91
Tender 5	2000 / FL70 / 21	\$823.82
Brush 6	1985 / Chevy / 36	\$1,700.97
Tender 8	2000 / FL80 / 21	\$9,279.20
Brush 11	1992 / Ford /29	\$3,132.00
FR 10	1999 / Chevy / 22	\$100.00
Ford Excursion	2004 / Ford / 17	\$1,966.02
Total		\$22,806.30

Completed Station Repairs & Upgrades

- Annexation of 330 acre State Land Trust – COMPLETED
- Thinning project to the 330 acre parcel of State Trust Land - COMPLETED
- Building 1 and 2 concrete apron project – COMPLETED (\$11,153.50)
- Station safety project – COMPLETED (\$3,100.00)
- Reels Project – COMPLETED (\$2,163.85)
- Repeater Project – Near Completion
- Station Plumbing project – COMPLETED (\$1,752.98)
- Upgrade of Fire Fighting Air Packs – COMPLETED (\$950.00)
- Purchase of Fire Fighting Hose Packs – COMPLETED (\$4,973.40)
- Fleet Tire upgrade – COMPLETED
- Engine 1 Equipment Upgrades – Partial Completion (\$930.29)
- Brush equipment upgrade _ COMPLETED (\$378.11)
- Fire Extinguisher upgrade – COMPLETED (\$762.00)
- Tender 8 upgrade – COMPLETED
- Thermal Imaging Camera – Donated by Auxiliary

Members Demographic

Current Number of Members: 12

Command Group – Fire Chief and Assistant Fire Chief are both professional Firefighters with a combined 48 years of experience.

Age Group	Number of Personnel
20's	1
30's	3
40's	0
50's	4
60's	2
70's	2

Years of Service	Number of Personnel
1	5
2	3
6	1
13	1
16	1
32	1

Basics Training / Type	Number of Personnel
Wildland Basics (130/190)	7
Structure Basics (FF 1/FF 2)	3
Medical Basics (CPR/AED)	6
EMT	2

Training Hours (July 2021 – July 2022)

2021	12 Training sessions	144 Training hours
2022	12 Training sessions	124 Training hours
Total	24 Training sessions	268 Training hours

Incidents

July 1, 2021 to June 30, 2022

Type	Incidents
Medical	11
Structure Fire	9
Illegal Burning/Invest	2
Traffic Accident	5
Wildland/Grass Fire	6
Lightning Strike	1
Train Derailment	1
Tree Fire	3
Wellness Check	4
Bee Issue	1
Total:	43

In District Responses = 17

Reported incidents previous year July 2020 – July 2021 = (41)

Future Goals:

- Wildland Fire Threat Reduction
This continuing project is critical to reducing the fire danger to the residents and properties of the SFE development.
- Rafael Fire Follow Up
Continuing interaction with Coconino County Sheriff's Office and Emergency Management on the improvement of an evacuation process for the fire district.

- Radio System
 - Continue improvement of radio system and compliance with FCC regulations.
- Administration:
 - Continue continuity guide
 - Personnel file review/update
 - New member recruitment, orientation and training
 - Taskbook Documentation
 - Website review/update
 - Securis information
 - Standard Operating Guidelines
- Training:
 - Continue interaction with regional partners
 - Continue multi-functional use of apparatus
 - Continue hands on, repetitive scenario-based training
 - Driver Training
- Apparatus:
 - Purchase of newer brush vehicle
 - Tender 5 dump valve
 - Continued upgrade for Brush 6
 - Water Trailer 10 improvements (road and pump capability)
 - Trailer for movement of orange porta tank (4,000 Gal)
- Station:
 - Emergency power needed to sustain operations during announced or emergency brownouts and blackouts
 - On site refueling provisions needed due to commercial providers being down during power outages
 - Examine capability and supply necessities for shelter operation.